

How to make a clergy shirt from a mock turtleneck shirt



Buy a well fitting mock turtleneck top. The one I am using here is an UltraSoft by National I bought on Amazon.

Fold the collar down to make it even shorter. I find it more comfortable with the collar edge folded to the outside, like a traditional turtleneck. Sew the fold down with large, looser stitches so the collar will still stretch to go over your head.



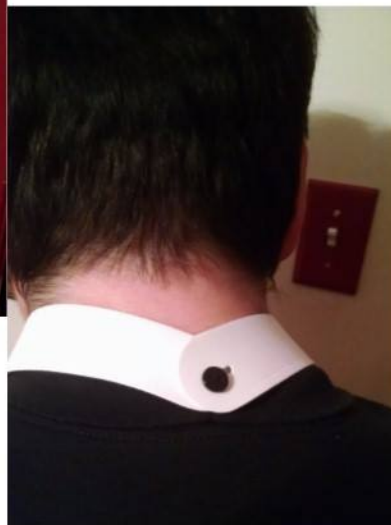
Sew a 1/4" button on the center front and center back of the collar. The button will need some "give" to allow the stiff plastic collar to button over it. I found it helpful to put a toothpick between the button and shirt while sewing it on, then remove the toothpick to have the correct amount of give.



You can use a button with a metal shank as well, but I had trouble finding one with a 1/4" head.



I measured my neck and it was 16 1/2" bare. I found an 18" Clericool collar worked well with the shirt in cold weather, but I needed an 18 1/2" collar in hot weather. This collar is 1 1/4" tall.



I used a black button so you could see how the collar connects to the shirt. I usually use a white button to blend in with the collar.

So that's how to simply convert a mock turtleneck to a clergy shirt.